

GET PQ Diesel Generators

Extremely Heavy Duty Gen-Sets

For Critical Continuous Duty Applications



GET PQ series diesel generator sets are designed to be the best, longest lived, most reliable, and lowest operating cost diesel generators available in the world today. Manufactured in the USA for outstanding quality control.

PQ models include units to produce from 1.5 to 3.0 MW for heavy duty, continuous applications. The engines run at lower speeds for long, reliable service, and produce lower emissions than competing equipment. These systems operate on diesel fuel or bio diesel. Conversion to run on

93% natural gas, 7% diesel, or on HFO (Heavy Fuel Oil) is available at extra cost.

We can supply these systems in skid mounted or containerized configurations. Comprehensive instrumentation is supplied as standard equipment and includes PLC operating system, remote control, alarm package all the customary sensors & readouts provided in premium quality generators, plus extraordinary, very valuable additional instruments such as sensors to monitor main bearing temperatures in order to prevent engine failure & damage.

The heavy duty construction and superior design of these outstanding systems allows them to operate in high elevations and under a far wider range of ambient temperatures than alternate equipment, without reducing the continuous output power. An optional waste heat powered evaporator can be added to produce 20,000 US Gallons (75,700 Liters) per 24 hours operation.

- **Utilities**
- **Municipalities**
- **Islands**
- **Industrial Complexes**
- **Remote Mines**
- **Very Rapid Delivery**
- **Top Quality**
- **Highly Reliable**
- **Lowest Running Cost**
- **Premium Quality Service**

Get the best, most reliable most cost effective diesel generators in the world.

Contact us today!



© Copyright 2010

Global Energy Technologies, Inc.
A Puerto Rico Corporation

Mail: PO Box 90756, Long Beach, CA 90809-0756, USA

Tel: 1-787-303-0090; Fax: 1-787-303-0091

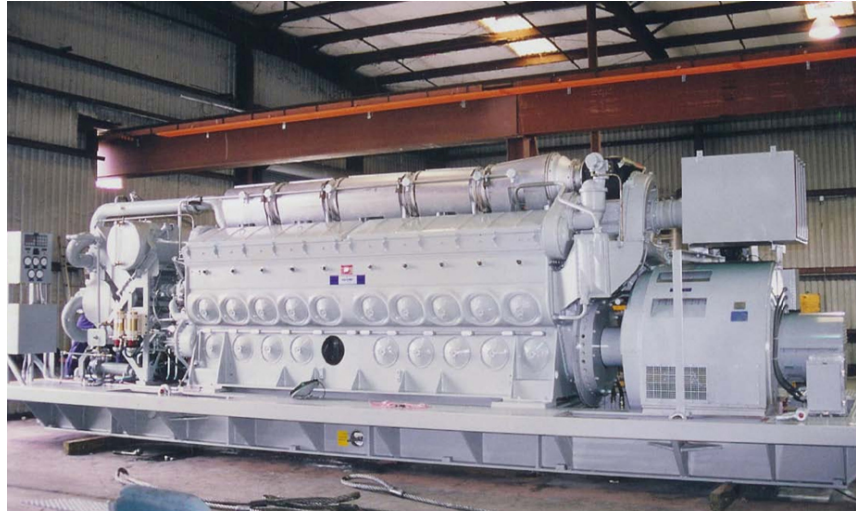
E-Mail: info@Get-Inc.com

www.Get-Inc.com

Substantial inventory and advanced manufacturing techniques enable us to build and deliver your generators quickly, like no other supplier.

Operating costs, fuel consumption, and emissions are substantially lower than other diesel generators, and reliability is extraordinarily high. Technical support is also superb. For these reasons, GET PQ heavy duty diesel generators should be your first choice for any important application where 1.5 MW or more of prime or reliable standby power is required.

GET can provide generators only, or generators plus switchgear, plus fuel tanks, or turnkey projects including buildings or containerized systems, installation, startup, etc. A 100 MW project can be completed in as little as 6 months with standard delivery, or 3 months with rush delivery.



20 GM/EMD 2.5 Megawatt Generator Sets

Lakeland Electric



Packaging Facility

Main Assembly Floor